

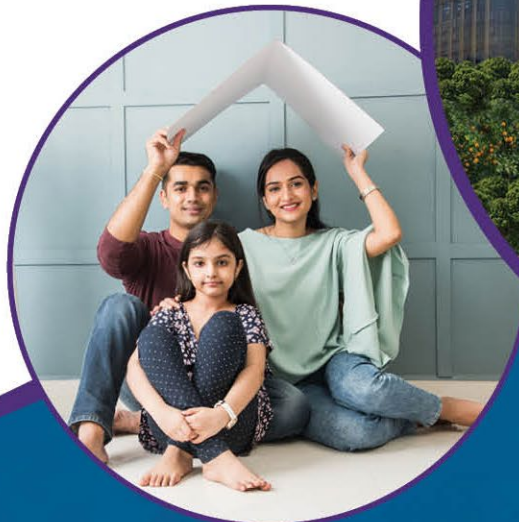


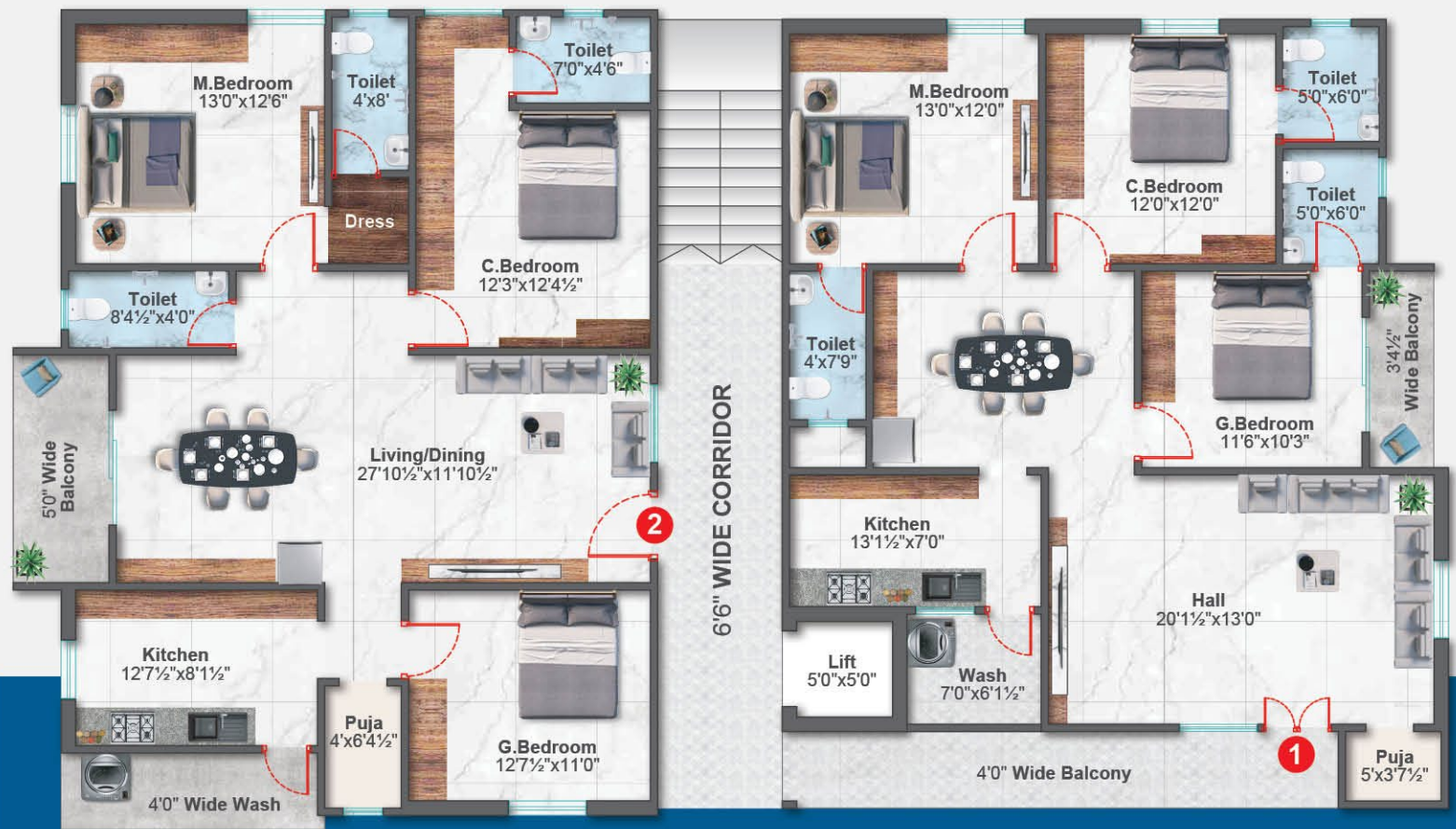
A project by



Find a space that suits  
**Your Lifestyle**  
your ideal home awaits.

3 BHK Luxury Apartments @  
Ameenpur, Hyderabad.





## TYPICAL FLOOR PLAN

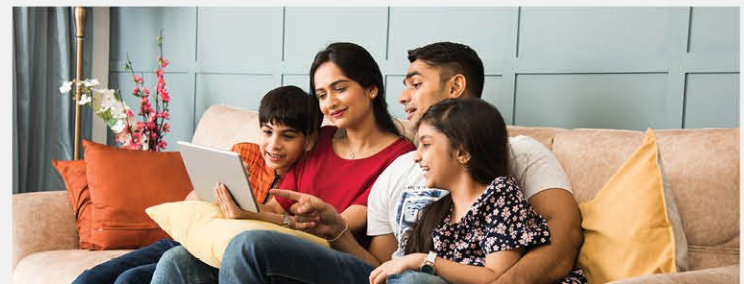


### PROJECT AMENITIES

- ◆ 24 hrs Backup (Lift & Common Areas)
- ◆ Car Parking
- ◆ CC TV & Solar Fence\*
- ◆ Landscaping
- ◆ Rain Water Harvesting (Zero Wastage)
- ◆ UPS Wiring
- ◆ Borewell Recharge
- ◆ 30 Feet Road Facing

### AREA STATEMENT

Flat No	Facing	Unit Size	Area in Sft.
1	East	3 BHK	1730
2	North	3 BHK	1730





**RADHE SIGNATURE**

**TADO  
PROJECTS**



**TADO  
PROJECTS**



FLAT NO:

**01**

3 BHK  
East Facing  
1730 Sft



## 3D ISOMETRIC VIEWS

FLAT NO:

**02**

3 BHK  
North Facing  
1730 Sft





## FOUNDATION & STRUCTURE

RCC Framed Structure to with stand winds and seismic loads for zone II. Cement - Ultratech, Maha HD, Deccan, Steel - Suguna / SS Gold 600.



## WALL

Good quality light weight Red Bricks from Karimnagar and used, Plastering with smooth finishing cement mortar, 9" thick external & 4½" thick for internal walls.



## DOORS

Main Door: Indian - Teak wood frame and veneered flush shutters aesthetically designed with premium hardware fittings. Internal Door: Teak wood frame and Designer flush doors.



## WINDOWS

UPVC windows with mosquito, mesh & aesthetically designed MS Grills for safety windows.



## PAINTING

External: Textured or smooth finish with external weather proof emulsion or reputed make Asian or equivalent. Internal: Smooth finish with wall putty, two coats of Acrylic emulsion paint, over a coat of primer.



## KITCHEN

Granite platform with stainless steel sink, adequate power points for kitchen appliances and provision for cabinets, exhaust fans and chimney.



## BATHROOMS

Well Organized bathrooms as per international standards, one M.bathrooms consist of wash basin, EWC with flush tank of ISI approved make. Anti-skid tiles for the floor & up to door height. Hot and cold wall mixer with bath spout shower of premium brand. Provision for geyser in all bathrooms. Chrome plated faucets premium brand - Jaquar / equivalent.



## PLUMBING & SANITARY

EWC of reputed make. Wash basins in dining area, master and children's toilet of reputed make. Single lever fixtures with Diverter-cum shower, CPVC pipes for plumbing of premium make.



## FLOORING

Double charged Vitrified tiles of reputed make for Bedrooms, Drawing and kitchen. Anti-skid tiles of reputed make for balconies and utilities.

Premium brand - Aparna, AGL or equivalent.

Corridors: Polished granite.

Staircase: Granite steps and landing with skirting.

Railing: Stainless Steel 304.



## ELECTRICAL

Concealed copper wiring of premium brand. Appropriate power outlets for A/C s, Geyser, Chimney, refrigerator and other appliance. Three-phase supply for each unit with individual meter. Miniature board. Modular switches of reputed make Havells, Anchor & Legrand. Provision for DTH and Internet Cable.



## GENERATOR POWER BACKUP

Standby power supply to common area, Lift & UPS Wiring.



## WATER SUPPLY

Adequate water supply through borewell and Mission Bhageeratha". Rain Water Harvesting: Rain water from terrace and open areas will be collected-filtered-recharged into borewell (Borewell Recharged).



## SECURITY AND SAFETY

CCTV Surveillance for premises and Solar Fencing\*.



## LIFT

Automatic Glass Door Elevator ISI Mark 6 passengers lift with V3F technology and Automated & big vision doors".



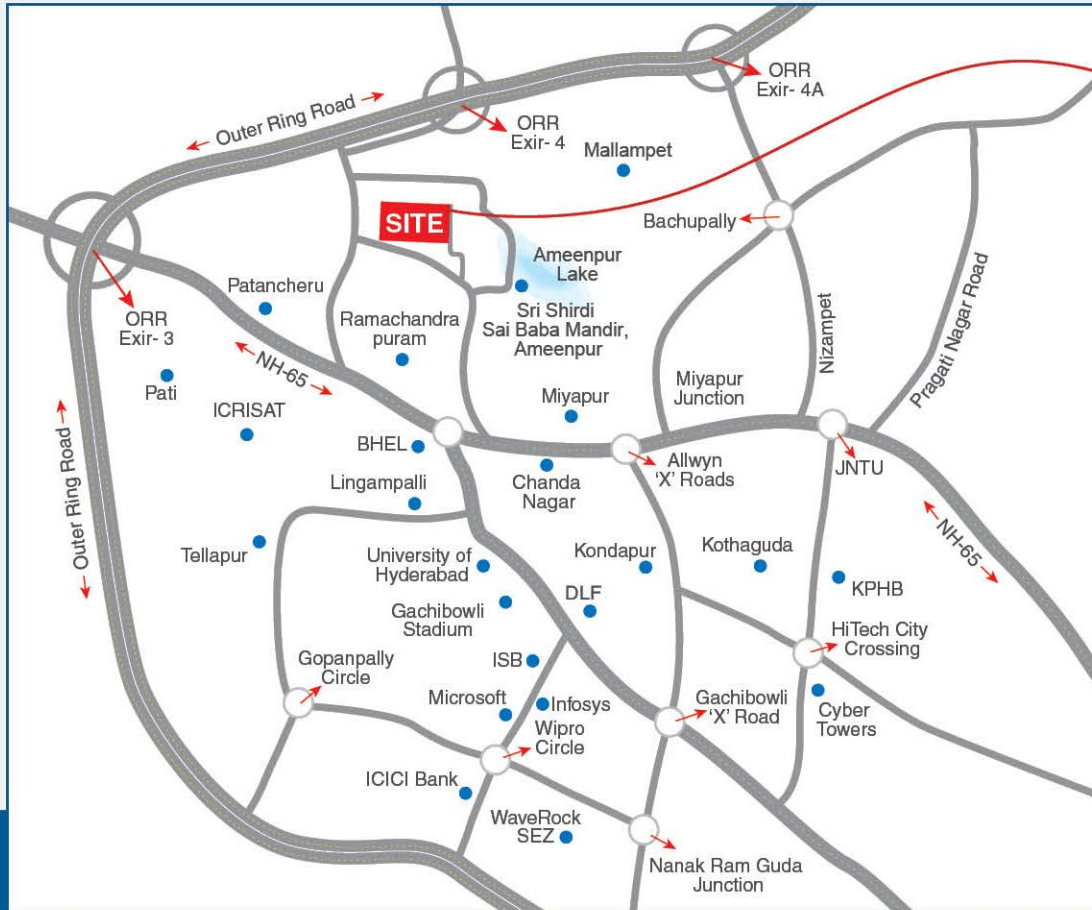
## NOTE

1) Registration Charges, GST and any other taxes applicable as per govt norms to be borne by the customers.

2) People desiring to alter / modify their flat can do so prior request with additional payment and without Disturbing the Structural Design\*.

# SPECIFICATIONS





**LOCATION MAP** (not to scale)



## LOCATION HIGHLIGHTS

Ameenpur Lake	-	5 Mins
Outer Ring Road	-	10 Mins
BHEL	-	20 Mins
Chanda Nagar	-	20 Mins
JNTU	-	22 Mins
Miyapur Junction	-	25 Mins
TCS	-	30 Mins
ISB	-	30 Mins
Lingampalli MMTS	-	30 Mins



Scan QR Code for Location

A project by



### OFFICE ADDRESS

#102, Plot No 201/A, Mathrusree Nagar,  
Near Sun Educational Institute, Miyapur,  
Hyderabad, Telangana - 500 049.



### RADHE SIGNATURE by TADO PROJECTS

Plot No: 599/3, Narendra Nagar, Ameenpur,  
Hyderabad, Telangana - 502 032.

Call: **+91 99597 17779, 77 3737 3545.**

MARKETING PARTNERS:

